



nZEB u obnovi / TRESS

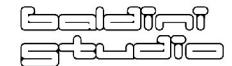
Tehnička rješenja za energetska
i statičku sanaciju zgrada



ALUKÖNIGSTAHL
SCHÜCO JANSEN



KNAUF



Af



Sveučilište u Zagrebu
Arhitektonski fakultet
University of Zagreb
Faculty of Architecture

KLASTER
nZEB.hr

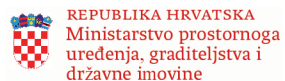
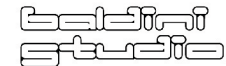


BIM za energetska učinkovitost

Gianmarco Ćurčić Baldini, dia.



ALUKÖNIGSTAHL
SCHÜCO JANSEN

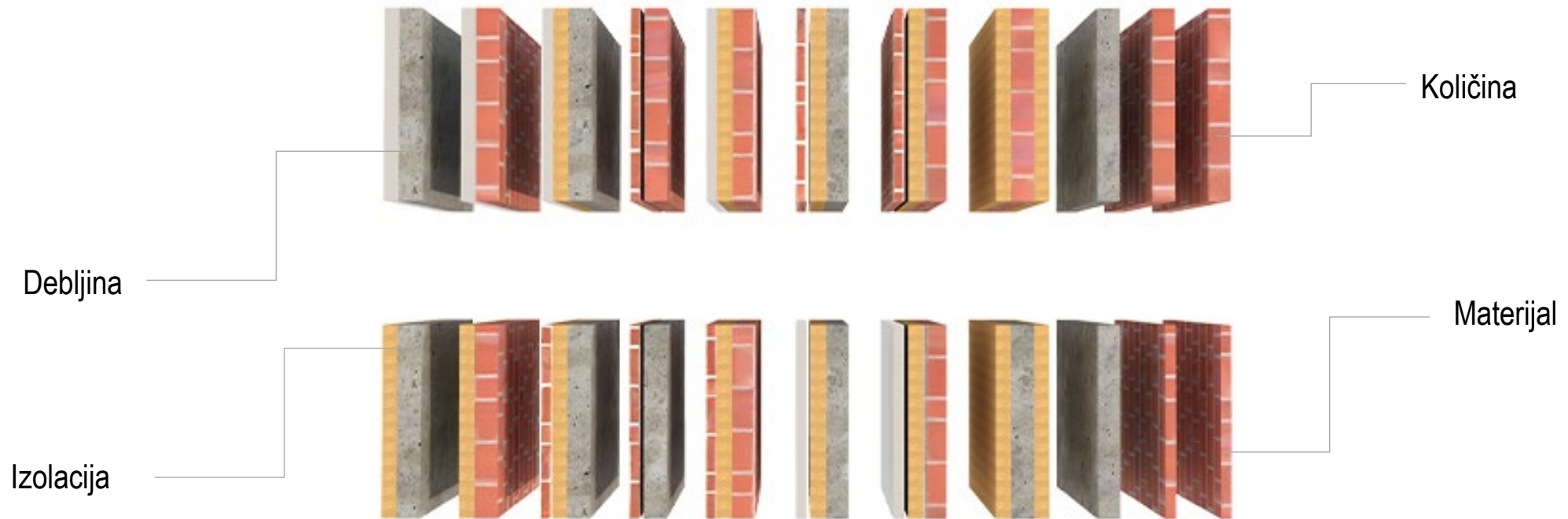


Energetska simulacija

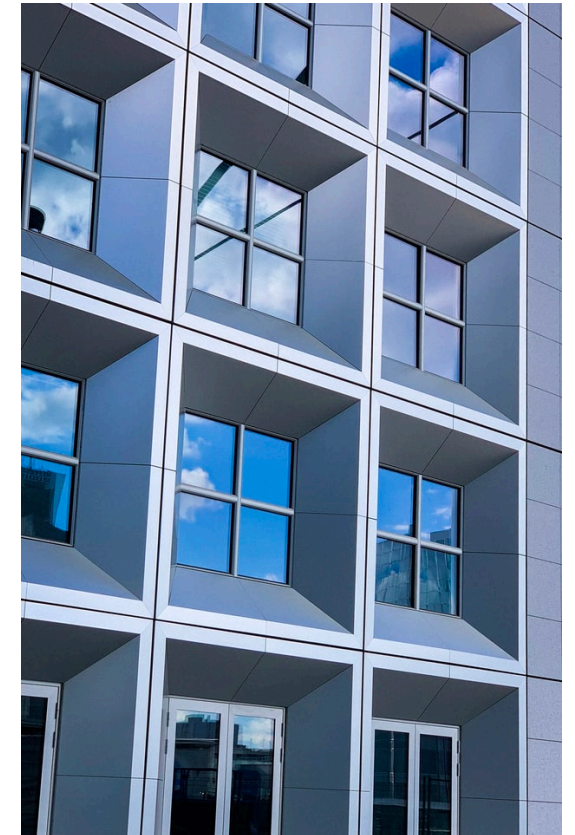
- Energetska simulacija po satnom mehanizmu proračuna
- Analiza svih elemenata ovojnice zgrade
- Analiza tehničkih rješenja
- Odabir urađaja i opreme
- Ekonomska opravdanost ugrađenih rješenja



Vrste zidova



Vrste prozora



Grijanje i hlađenje



Grijanje na kamin



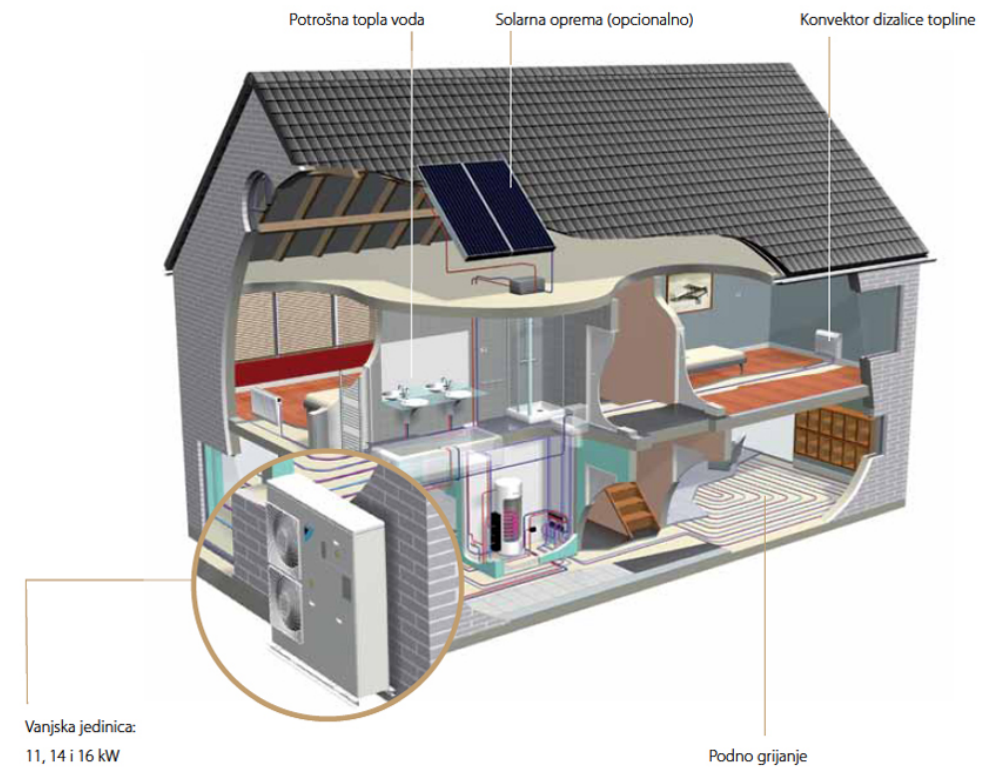
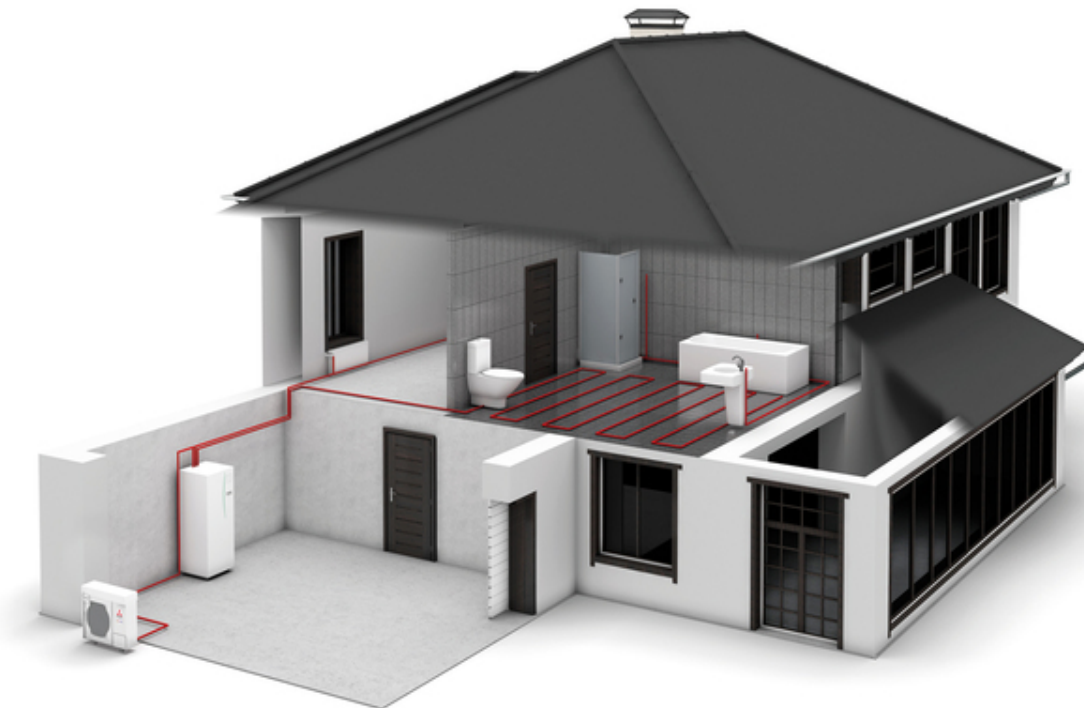
Solarni sustav grijanja



Podno grijanje

Fotografije: <https://www.fero-term.hr/web/5-vrsta-grijanja-i-kako-odabrati-ono-idealno/96>

Grijanje i hlađenje



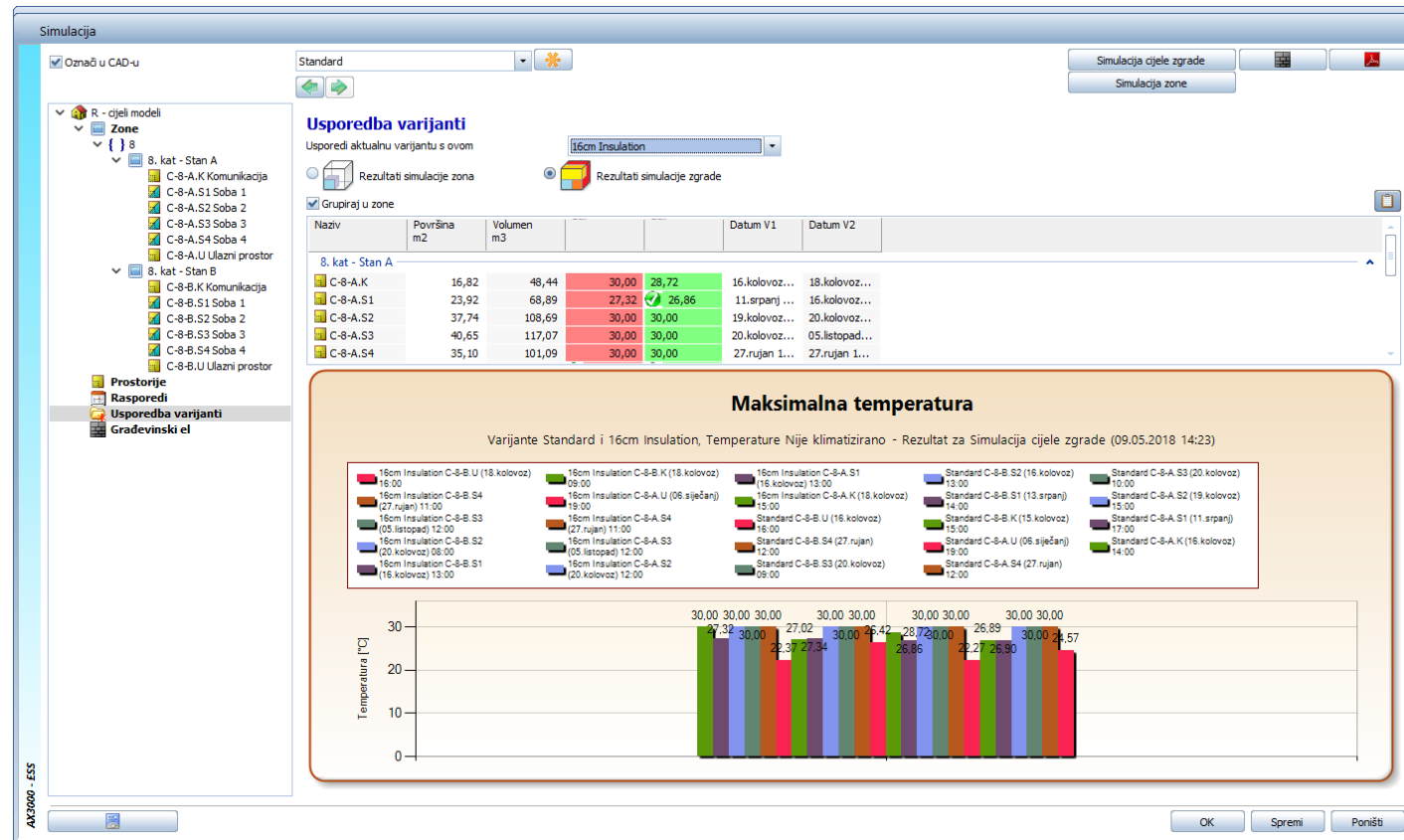
Fotografije: https://www.klimakoncept.hr/hr/podrska-klimatizacija-sve_o_klimatizaciji_stambenog_poslovnog_prostora/1425/135

Za bilo koju lokaciju

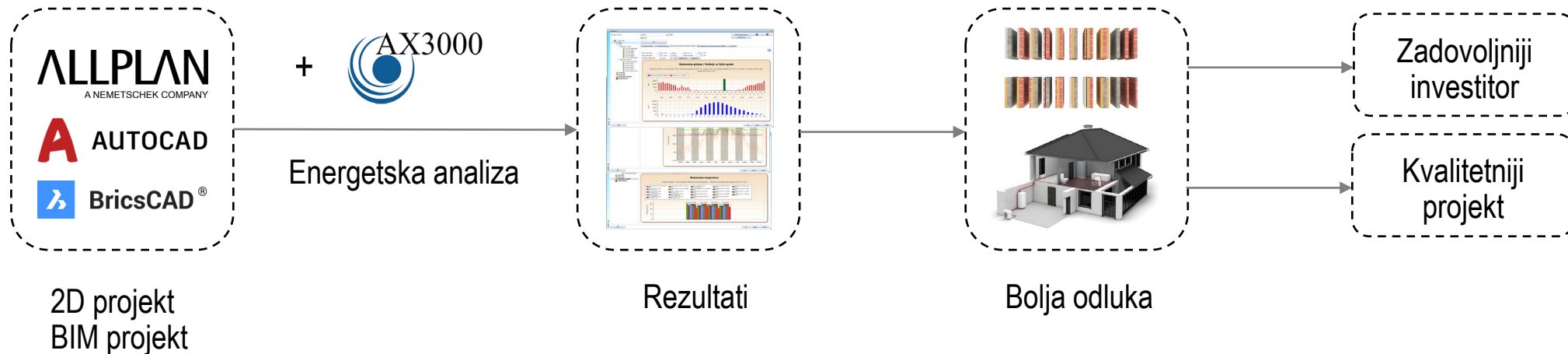
Točni podaci proračuna za bilo koju lokaciju

The screenshot displays the Allplan 2020 software interface. The main window shows a 3D perspective view of a building model and a 2D floor plan on the right. The floor plan includes room labels such as '0.2. Dnevni boravak M5 - Parket P=17.5m2', '0.2.08. 0.2. Kuhinja M5 - Pločice P=4.36m2', '0.3.02. 0.3. Kuhinja M6 - Pločice P=4.67m2', '0.3.03. 0.3. Dnevni boravak M5 - Parket P=12.96m2', '0.3.04. 0.3. Soba 1 M5 - Parket P=12.53m2', '0.3.05. 0.3. Kupaoonica M6 - Pločice P=5.1m2', '0.3.06. 0.3. Soba 2 M5 - Parket P=11.54m2', '0.2. WC M6 - Pločice P=2.15m2', and '0.3. WC M5 - Pločice P=1.28m2'. A 'Select weather file' dialog box is open, showing a list of weather files including 'SIBENIK-hour', 'Sisak-hour', 'SLAVONSKI_BROD-hour', 'Sjeme_Puntjarka-hour', 'SPLIT_MARIAN-hour', 'SPLIT_RESNIK-hour', 'VARAZDIN-hour', 'VELA_SESTRICA-hour', 'ZADAR_PUNTAMIKA-hour', 'Zadar_Zemunik-hour', 'ZAGREB_GRIC-hour', and 'ZAGREB_MAKSIMIR-hour'. A 'Simulation' dialog box is also visible, with options for 'Simulation entire building' and 'Simulation Zone'. A graph titled 'Exterior temperature [°C]' shows a monthly temperature profile from January to December, with temperatures ranging from approximately -0.12°C in winter to 42.0°C in summer.

Rezultati



Energetska simulacija na 2D i na BIM projektima



Javite se za demo verziju i prezentaciju!

marco@baldinistudio.hr

info@baldinistudio.hr

www.baldinistudio.hr



/ baldinistudio



/ baldinistudio



/ baldinistudio



/ baldinistudio