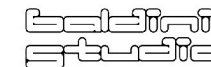




nZEB u obnovi / TRESS

Tehnička rješenja za energetska
i statičku sanaciju zgrada



Af

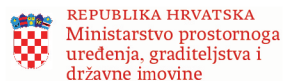
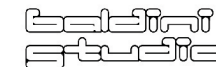


Sveučilište u Zagrebu
Arhitektonski fakultet
University of Zagreb
Faculty of Architecture



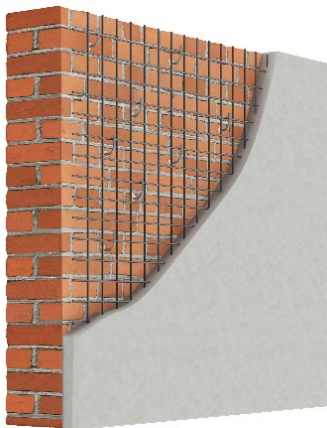
Iskustva u sanaciji zgrada od potresa u Italiji

Luca Albertario



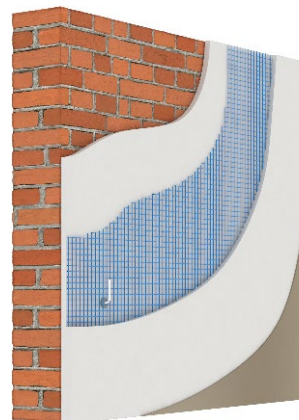
OJAČANJE

Tradicionalno ojačanje torkretiranjem



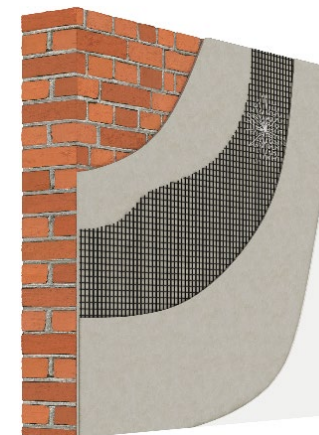
Debljina sloja min **5 cm**
Mala kompatibilnost s podlogom
Korozija
Veliki broj sidara

CRM Composite Reinforced Mortars



Debljina sloja **3,5-5 cm**
Metalne ili AR staklene mreže
Mehanička kompatibilnost
Veliki broj sidara

FRCM Fabric Reinforced Cementitious Matrix



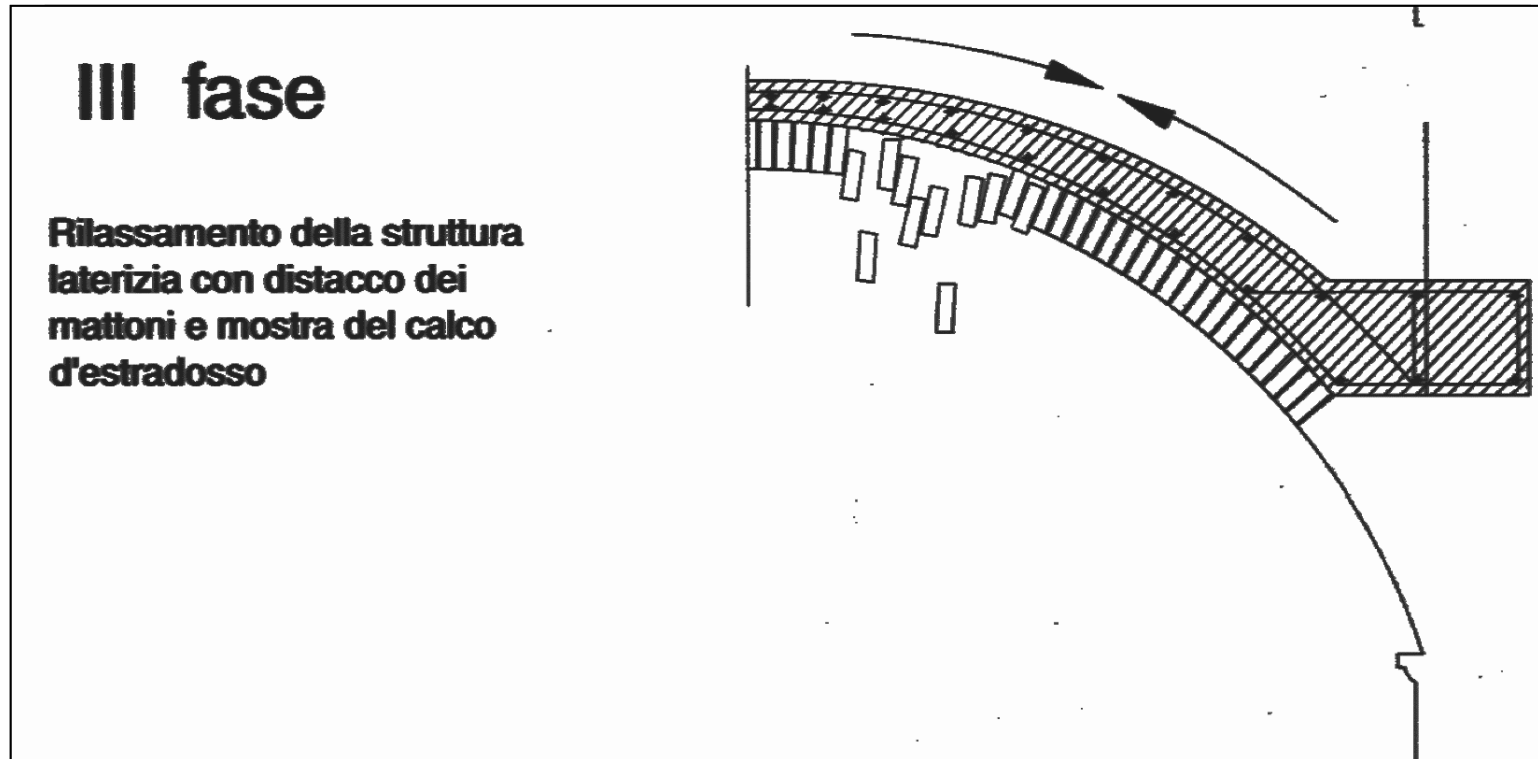
Debljina sloja **1,5 cm**
Visokokvalitetno ojačanje (staklena vlakna, bazalt, karbon)
Velika prionjivost
Mala potreba za sidrenjem

Damage in a masonry building in Nocera Umbra after the 1997 earthquake



- (1997) Repair and investigation techniques for stone masonry walls. Binda L, Modena C, Baronio G, Abbaneo S
- Experimental evaluation of the in-plane shear behaviour of masonry walls retrofitted using conventional and innovative methods. Corradi M, Borri A, Vignoli A (2008)
- Masonry wall panels retrofitted with thermal-insulating GFRP-reinforced jacketing Antonio Borri . Marco Corradi Romina Sisti . Cinzia Buratti .
- Elisa Belloni . Elisa Moretti

Damage in a masonry building in Nocera Umbra after the 1997 earthquake



- (1997) Repair and investigation techniques for stone masonry walls. Binda L, Modena C, Baronio G, Abbaneo S
- Experimental evaluation of the in-plane shear behaviour of masonry walls retrofitted using conventional and innovative methods. Corradi M, Borri A, Vignoli A (2008)
- Masonry wall panels retrofitted with thermal-insulating GFRP-reinforced jacketing Antonio Borri . Marco Corradi Romina Sisti . Cinzia Buratti .
- Elisa Belloni . Elisa Moretti

Reference

Basilica di San Francesco D'Assisi, Assisi - 1997



Reference

Reggio Emilia - 2012



Reference

Camerino – 2016



Reference

L'Aquila – 2009 - 309 deaths - 80.000 evacuated



Reference

Ex Convento San Domenico – L'Aquila (Italy) – 2004



Reference

L'Aquila – 2009 – FRM applications



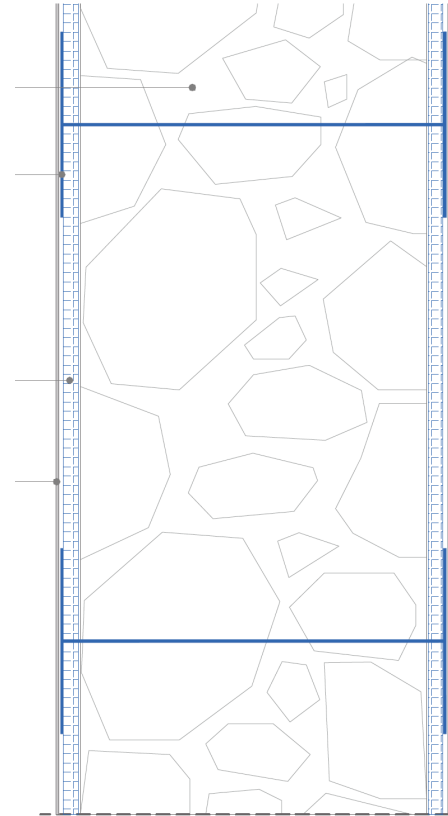
Reference

Convento de Tlayacapan, Mexico – 2019-20



Reference

Antiguo Club Cartagena, Colombia – 2019-20

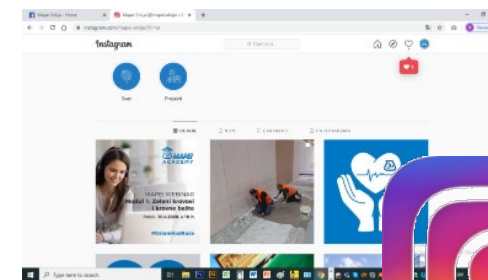
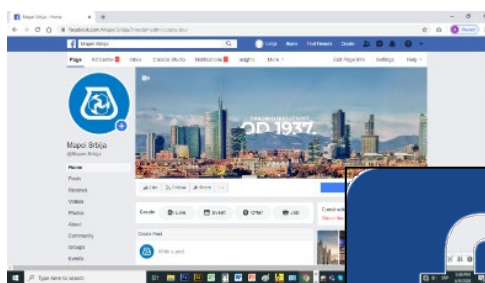


Experimental campaign

CRM and FRCM test



SVE NOVOSTI PRATITE NA NAŠIM DRUŠTVENIM MREŽAMA



Af



Sveučilište u Zagrebu
Arhitektonski fakultet
University of Zagreb
Faculty of Architecture



HVALA NA PAŽNJI!

Za sva pitanja kontaktirate nas na:

e-mail: tehnika@mapei.hr

telefon: 0800 0208

www.mapei.hr